

PART OF SECTION 15, T.6N., R.2E., S.L.B. & M.

SOUTH FORK RANCHETTES SUBDIVISION

LOTS 1-4 & 14-20

IN WEBER COUNTY

SCALE 1" = 200'

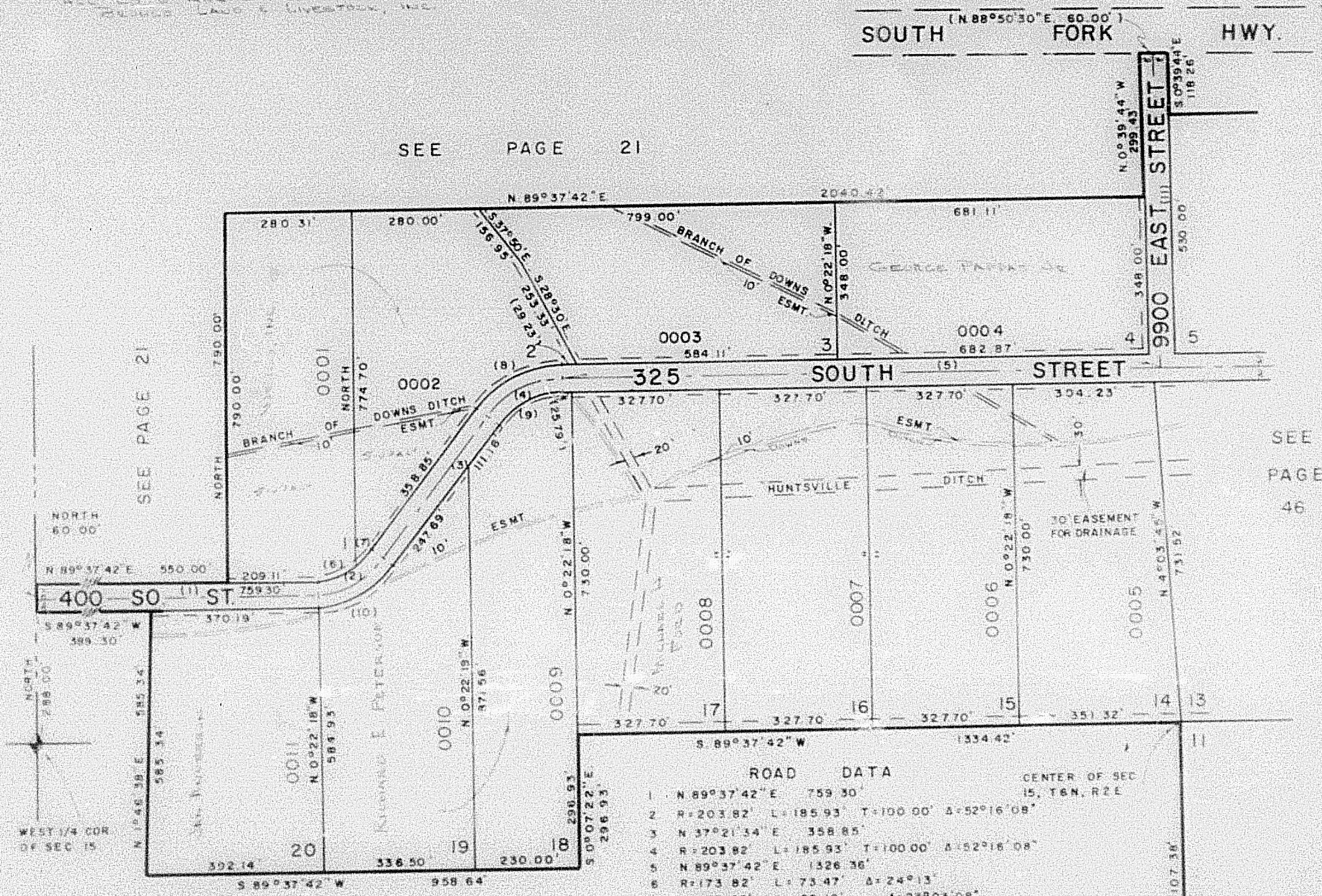
TAXING UNIT 58

PREFIX 21-045

EXCEPT WHERE OTHERWISE SHOWN
ALL LOTS ARE OWNED BY
DORIS LADD & LIVESTOCK, INC.

SOUTH FORK HWY. (N 88°50'30" E, 60.00')

SEE PAGE 21



SEE PAGE 21

SEE PAGE 46

ROAD DATA			CENTER OF SEC 15, T.6N., R.2E.
1	N 89°37'42" E	759.30'	
2	R=203.82'	L=185.93'	T=100.00' Δ=52°16'08"
3	N 37°21'54" E	358.85'	
4	R=203.82'	L=185.93'	T=100.00' Δ=52°16'08"
5	N 89°37'42" E	1326.36'	
6	R=173.82'	L=73.47'	Δ=24°13'
7	R=173.82'	L=85.10'	Δ=23°03'08"
8	R=233.82'	L=213.44'	Δ=52°16'08"
9	R=173.82'	L=158.57'	Δ=52°16'08"
10	R=233.82'	L=213.44'	Δ=52°16'08"
11	N 0°39'44" W	677.84'	

SEE PAGE 21

FOR COMPLETE ENG DATA
SEE ORIG DES PLAT IN
BOOK 17, PAGE 40

7' UTILITY & DRAINAGE EASEMENTS
EACH SIDE OF PROPERTY LINE AS
INDICATED BY DASHED LINES

ALL LOTS SUBJECT TO
EXISTING DITCH RIGHTS